

Customer :

customer

Customer part :

customer part

Comment :

Comment

S1=5.2

S2=5.11

Tmax=462

Tp S2=501.0

PI=0.5

HI=84

Sample =1740.80

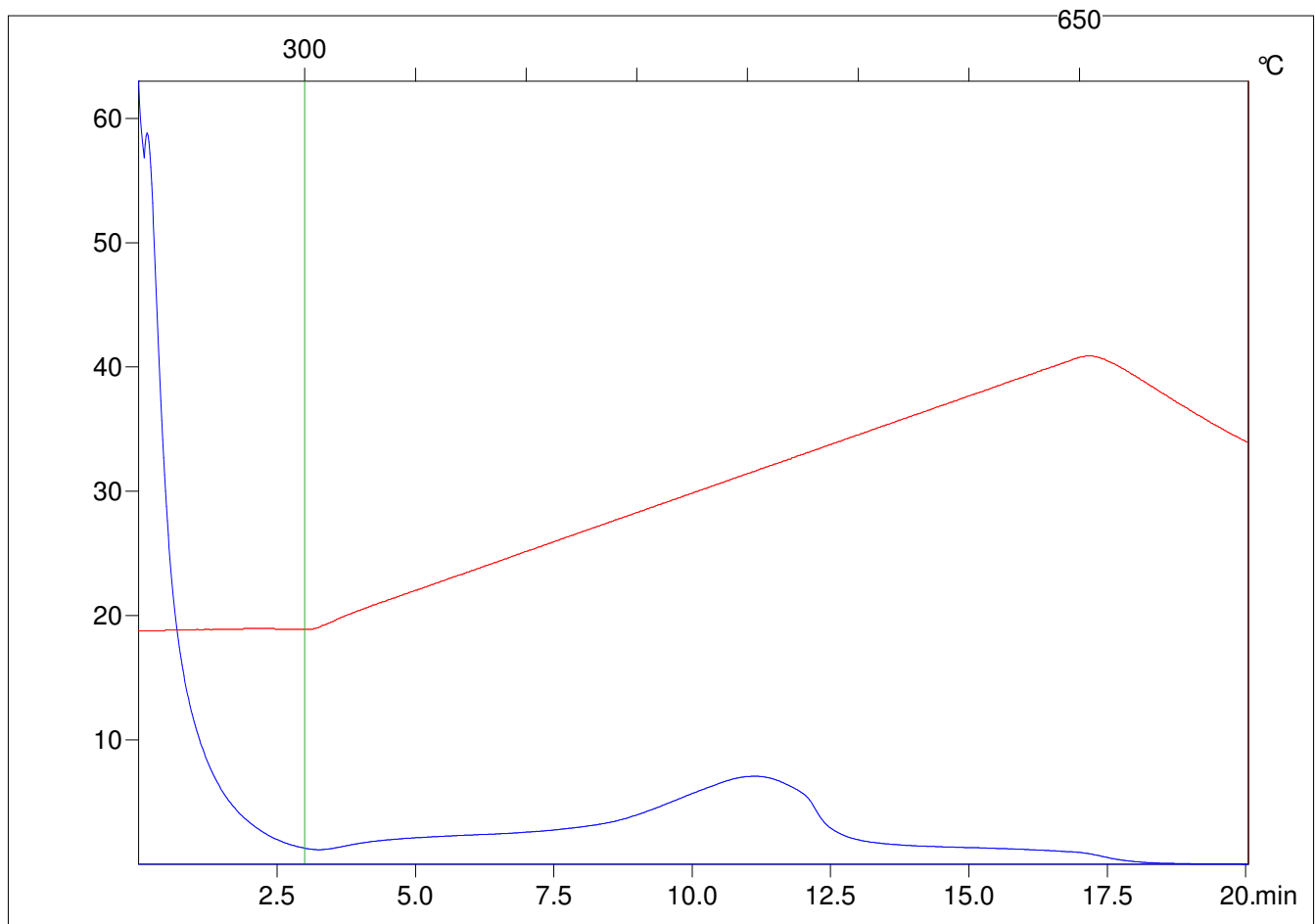
Method =Bulk Rock

Cycle=Basic

KFID(10*9)=1444

Qty =70.1

TOC=6.11



C:\VINC\PK2_1792\PK075.R00 : FID pyrolysis graphic

State Ok

Pyro Status Negative value

Oxi Status Negative value